

**Elite
Tours**

presents. . .

**Special points of
interest:**

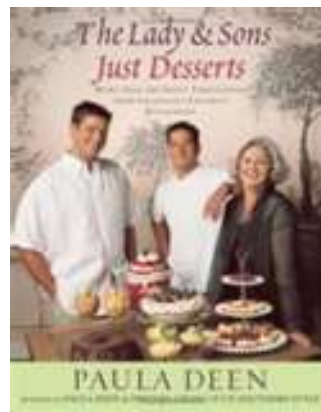
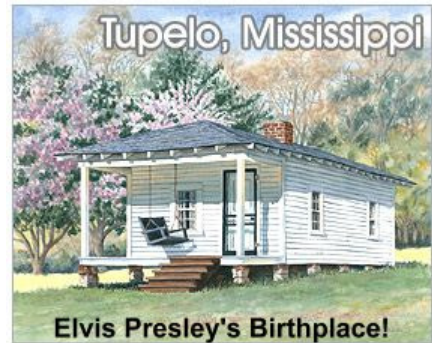
- Savannah, GA Guided Tour
- Paula Deen's Lady & Son's Restaurant
- Ships of the Sea Maritime Museum
- River Street
- GA State Capitol
- Charleston, SC
- Jack Daniels Distillery

Inside:

Day ONE & TWO	2
Day THREE	2
Day FOUR	2
Day FIVE & SIX	3
Day SEVEN & EIGHT	3
RESERVATION INFO	3
INSURANCE INFO	4

8 Day Savannah, Charleston & Atlanta

April 17-24, 2010



7 Nights Lodging, 7 Breakfasts & 2 Dinners,

All Admissions, Deluxe Motor Coach Transportation, & Luggage Handling Included in Savannah

DAY ONE—TWO—En-route



DAY ONE:

Begin your journey south picking up passengers. Tonight stay in Tupelo, MS or Mt. Vernon, IL, depending on departure location.

DAY TWO:

Today is another day of travel. Enjoy the scen-

ery as you travel. Make a short stop outside of Lynchburg, TN at the Jack Daniels Distillery. Here you will learn the history of the whiskey and the mand that made it famous or stop at the Birthplace of Elvis Presley. Over night in Marietta or Atlanta,

GA. Get a good nights rest, as tomorrow you will be in Savannah. Savannah's recorded history begins in 1733. That's the year General James Oglethorpe landed on a bluff along the Savannah River in February.

DAY THREE— GA State Capitol & Lady & Son's Restaurant



DAY THREE:

After breakfast you will tour the Georgia State Capitol. Throughout the Capitol you will view portions of the state's \$2 million art collection. You may also visit the public gal-

leries to view the General Assembly, if in session. Visit the hall of Valor, which houses the state's historic flag collection before your stop by the Capitol Museum. After checking into your hotel, have dinner at Paula Deen's

The Lady & Sons Restaurant. You may have seen her on her TV show "Cooking with Paula Deen." Not only a fantastic meal, but great southern hospitality! Spend the first of three nights in Savannah.

DAY FOUR—Tour Savannah



DAY FOUR:

Begin this morning after breakfast with an uninterrupted journey through old Savannah, around the historic squares, along the waterfront, and throughout the 2.2 square miles of

the Historic District aboard the Oglethorpe Trolley. After the tour you can visit many of the museums, historic squares, sightsee and stroll the entire historic district with the trolley coming around every 25-30 minutes. You

will have the opportunity to visit the Savannah History Museum on the site of the 1779 siege of Savannah, a Revolutionary War battle. There are many other places to visit in this beautiful historic district.

DAY FIVE & SIX—Richmond Hill, GA

DAY FIVE:
Today visit the Ships of the Sea Maritime Museum. Founded in 1966, see exhibits include ship models, painting and antiques principally from the great era of Atlantic trade and travel between England and America during the

18th & 19th centuries. Before returning to the hotel, shop and dine on River Street. The nine-block brick concourse is ideal for strolling and ship watching.

DAY SIX:
Today you will depart Savannah. Take a guided tour of Charleston, SC. Charleston has been listed in the Top Ten of places travel destinations for the last sixteen years. Overnight in Marietta or Atlanta, GA.



DAY SEVEN & EIGHT—The Journey Home

DAY SEVEN:
This morning you will visit the Georgia Aquarium. This is the world’s largest aquarium, with over 8 million gallons of water. See more than 100,000 animals in over 500 dif-

ferent species. Notable species include whale sharks, beluga whales and manta rays. Then you will begin your journey home.

DAY EIGHT:
Today you will return home with new friendships, and lasting memories of beautiful Savannah, GA.



Dates & Location of Departure

April 17-24, 2010

Departs Lincoln, Omaha, Council Bluffs, Des Moines & Ottumwa

Departs Oklahoma City, Shawnee, Ft. Smith, Conway & Little Rock

Please call for reservations, phone numbers are listed on back.

Double
Occupancy
\$799 pp
Single
Occupancy
\$1,044

Elite Tours

1603 Farnam St.
Omaha, NE 68102

Toll Free:
1-800-488-2114

Co. Bluffs:
712-323-3999
Omaha:
402-342-4585

Wichita:
316-685-5058
Kansas City:
816-474-3521

Deadwood:
605-578-7548

Insurance Provided by:

Berkely Care

300 Jericho Quadrangle
PO Box 9022

Jericho NY 11753

www.travelclaim.com

We're on the web

www.EliteTours.us

8 Day Savannah Tour April 17-24, 2010

Thank you for your interest in Elite Tours. We have been serving The Great Plains area since 1985, offering many different tours, from 2 Day Casino Tours to 12 Day Get-A-Way Vacations. We will take you to some of the most beautiful sites in the United States. You can see the fall foliage in New England all the way to Old Faithful in Yellowstone National Park.

Our tours are designed with Seniors in mind, making the trips easy on the eyes as well as the feet! We take many breaks for your comfort and have on board entertainment. We give you plenty of time to explore the sites on your own as well as many guided tours.

All tours are accompanied by one of our professional escorts. We stay in the best hotels and have the best drivers Arrow Stage Motor Coach Co. has to offer. The hotels we stay in offer all the amenities to make your stay as comfortable as possible. Arrow Coaches are deluxe touring coaches with on board entertainment and restrooms.

Elite Tours, also doing business as Goody Tours, is a member of the American Bus Association and the National Tour Association. We have many regional offices in the mid-central US and currently are expanding to the Oklahoma City and Ft. Smith areas.

Please call for reservations. Upon receiving your confirmation letter, please send a \$50 deposit per person. Total balance is due three weeks prior to departure. We accept Visa, Master Card, Discover, and personal checks. Please ask about our travel insurance.

Your complete itinerary will arrive approximately two weeks prior to departure. This will include all contact information for the lodging included in the tour. For extended tours you may also receive luggage tags, please attach these to your luggage, as many of our tours offer baggage handling. You are welcome to bring one suitcase per person and also a carry-on bag. Small coolers are welcome on the coach as well.

Sincerely,

ELITE TOURS

Proud members of:



INSURANCE INFORMATION—OPTIONAL

Travel Protections Insurance is available with optional flight insurance.

Part A Travel Protection
Trip Cancellation
Trip Interruption
Travel Delay

Part B Medical Protection
Emergency Evacuation
Accident & Sickness
Medical Expense

Part C Baggage Protection
Baggage/Personal Effects
Baggage Delay
Part D Worldwide Emergency Assistance
Part E Optional Flight Benefit
Accidental Death & Dismemberment

Rates: per person
Double Occupancy:
Basic \$63
Enhanced: \$83
Single Occupancy:
Basic: \$82
Enhanced: \$109

Call Elite for more info.